



TWIAV – Tips & tricks

April 7, 2009 – Tip MI002: Accessing Web Map Services (WMS) with MapInfo Professional

Accessing Web Map Services (WMS) with MapInfo Professional

The OpenGIS® Web Map Service Interface Standard (WMS) provides a simple HTTP interface for requesting geo-registered map images from one or more distributed geospatial databases. A WMS request defines the geographic layer(s) and area of interest to be processed. The response to the request is one or more geo-registered map images (returned as JPEG, PNG, etc) that can be displayed in a browser application.

In this document we will show how to access a WMS server with MapInfo Professional.

Aerial Photo of the Netherlands, 2005

Here we use a web server offering aerial photos of the Netherlands as an example. The web server is hosted by the Dutch Geospatial Data Service Centre / National Aerospace Laboratory NLR, <http://gdsc.nlr.nl/gdsc/>.

The actual photos are taken by Aerodata International Surveys <http://www.aerodata-surveys.com/>.

The server URL you have to enter in MapInfo Professional is: <http://gdsc.nlr.nl/wms/lufo2005?request=GetCapabilities&service=WMS&version=1.1.1>

Step 1: Add the WMS Server

To access the WMS server with the aerial photo of the Netherlands, go to **File > Open Web Service > Open WMS...**

In the **Open WMS Table** dialog the default WMS Server shown is the *MapInfo Global WMS Server*. To add a new server, click **Servers...** and in the **WMS Server List** dialog, click **Add...**

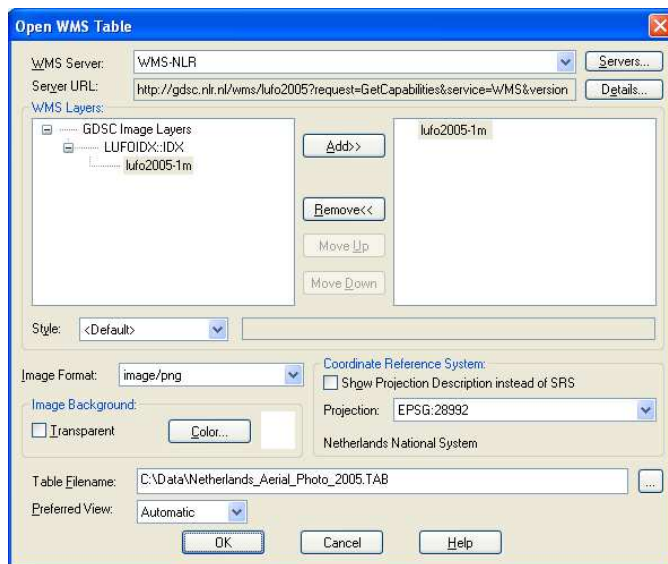
In the **WMS Server Information** dialog you can enter the URL. Click **Test URL...** to test the URL and click **Get Description** to get a description.

Step 2: Create a TAB file pointing to the WMS server

After adding the server, you can actually create a MapInfo table file pointing to this server.

In the **Open WMS Table** dialog you can add the layer *lufo2005-1m*. (A WMS server can offer more than one layer, but in this case there is only one.)

You should also enter a name and a location for the TAB file to be created, for example C:\Data\Netherlands_Aerial_Photo_2005.TAB.



When you click **OK**, the aerial photo will be shown in a Map Window.



As you can see, two files are created:

- Netherlands_Aerial_Photo_2005.TAB
- Netherlands_Aerial_Photo_2005.xml

Next time you want to access the server with the aerial photo, you can just open the TAB file.

You can even open this TAB file with MapInfo ProViewer. You cannot configure the connection with the WMS server – you will need MapInfo Professional for this – but the moment you created a TAB file with a WMS request (in the XML file), you can use it in MapInfo ProViewer as well.