



TWIAV – Tips & tricks

April 8, 2009 – FR_French_Data_Readme

France: Departments, Capitals and Rivers

In this document you will find a short description of the data in the file FR_French_Data.zip.

The file is offered to you by TWIAV – Tips & Tricks (www.twiav.nl).

You can use these data to practice with and to get to know MapInfo Professional.

The zip file does contain the following tables:

- **FR_Départements2006**: a table with the 96 regions of continental France, including Corsica, with some demographic data (for the year 2006)
- **FR_Chefs_Lieux_Départementaux**: a table with the 96 capitals of the departments
- **FR_Fleuves**: a table with the 8 most important rivers in France

These data are compiled from publicly available sources:

- Data from the French *Institut Géographique National (IGN)*:

Mif/Mid files which can be downloaded for free from their website:

<http://professionnels.ign.fr/42/produits-gratuits/produits-gratuits-a-telecharger.htm>

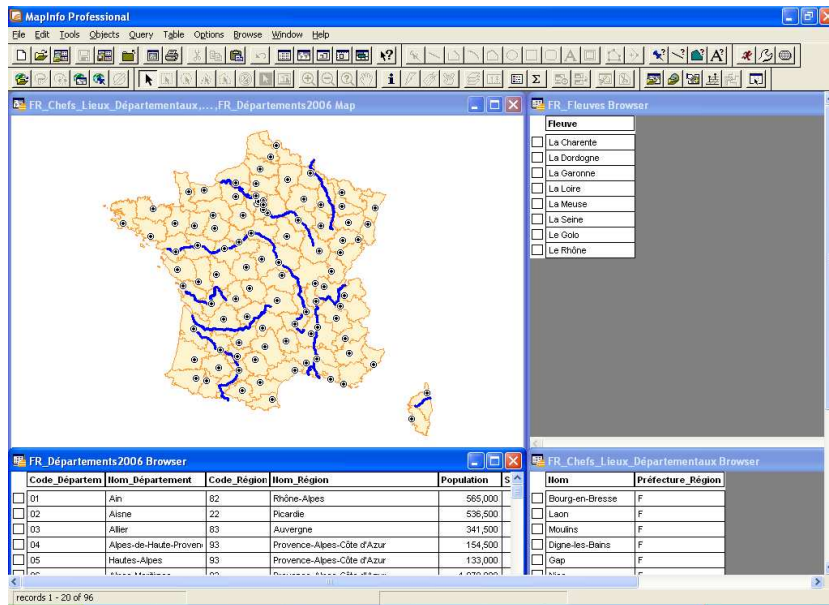
GEOFLA® Départements, la description de l'ensemble des unités administratives du territoire national;
BD CARTHAGE®, la BD complète du réseau hydrographique français;
RGC®, le Répertoire Géographique des Communes.

©IGN - 2008

- Data from the French *Institut national de la statistique et des études économiques (INSEE)*: <http://www.insee.fr/fr/default.asp>
- Wikipedia: <http://fr.wikipedia.org/wiki/France>

You can use these data freely, but you have to acknowledge the source.

Figure 1: The workspace France.wor in MapInfo Professional



Technical data

The file FR_French_Data.zip does contain the following files:

```
01/28/2009 04:48 PM 2,043 France.wor
01/28/2009 04:24 PM 2,210 FR_Chefs_Lieux_Départementaux.DAT
01/28/2009 04:20 PM 384 FR_Chefs_Lieux_Départementaux.ID
01/28/2009 04:24 PM 4,096 FR_Chefs_Lieux_Départementaux.IND
01/28/2009 04:20 PM 6,144 FR_Chefs_Lieux_Départementaux.MAP
01/28/2009 04:24 PM 181 FR_Chefs_Lieux_Départementaux.TAB
01/28/2009 04:41 PM 10,050 FR_Départements2006.DAT
01/28/2009 04:30 PM 384 FR_Départements2006.ID
01/28/2009 04:47 PM 7,168 FR_Départements2006.IND
01/28/2009 04:30 PM 641,536 FR_Départements2006.MAP
01/28/2009 04:47 PM 324 FR_Départements2006.TAB
01/28/2009 04:26 PM 234 FR_Fleuves.DAT
01/28/2009 12:25 PM 32 FR_Fleuves.ID
01/28/2009 04:26 PM 1,024 FR_Fleuves.IND
01/28/2009 12:25 PM 391,680 FR_Fleuves.MAP
01/28/2009 04:26 PM 149 FR_Fleuves.TAB
```

Projection: French Lambert-93

Statistical data

Below you will find a short explanation of the content of the fields in the tables.

FR_Départements2006	
<i>Code_Département</i>	The INSEE* code of the department
<i>Nom_Département</i>	The name of the department
<i>Code_Région</i>	The INSEE* code of the region
<i>Nom_Région</i>	The name of the region
<i>Population</i>	The population of the department, status: January 1 st , 2006 / rounded to thousands**
<i>Superficie</i>	Total surface of the department (square kilometers)**
<i>Densité</i>	Population density: number of inhabitants per square kilometer**
FR_Chefs_Lieux_Départementaux	
<i>Nom</i>	The name of the capital of the department
<i>Préfecture_Régional</i>	Logical, indicating if the town is a regional capital or not***
FR_Fleuves	
<i>Fleuve</i>	The name of the river

* INSEE:

Institut national de la statistique et des études économiques

** Source:

<http://www.insee.fr/fr/ffc/figure/NATTEF01209.xls>

*** Example:

Lille is the capital of the department Nord and of the region Nord-Pas-de-Calais (Préfecture_Régional = "T"), whereas Arras is only the capital of a department – the department Pas-de-Calais – but not of any region (Préfecture_Régional = "F")

Disclaimer

The content of the files mentioned above is carefully composed. The content is based on publicly available data.

These files are only meant to be used as exercise data by people who want to extend and broaden their knowledge of MapInfo Professional.

The author does not confirm the correctness and completeness of the data in these files. The author cannot be held liable for the content of these files.